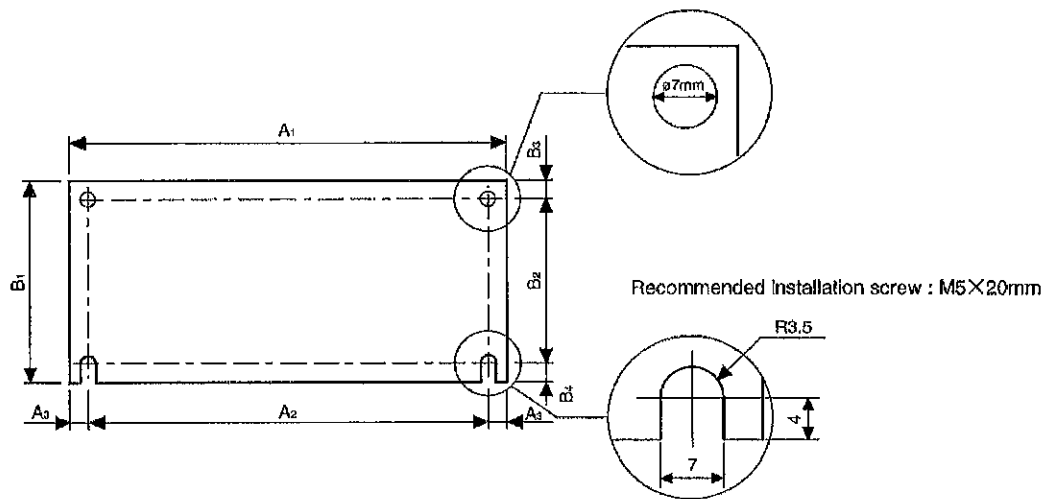


5-2. Installation of basic/expansion rack panel

This section explains the installation method of the basic/expansion rack panel in a control panel. Fix the basic/expansion rack panel on a partition plate of a control box. Select the appropriate fixing place taking into consideration the size of a wiring duct, wiring to the JW30H, a cable length of the I/O expansion cable, ventilation, maintenance, easy access for exchanging modules etc. We recommend that you install the basic rack panel at the bottom and the expansion rack panel above the basic rack panel.

Note: Use a high conductive partition plate of plating finish for fitting the basic/expansion rack panel so as to increase noise tolerance.

■ Installation dimensions of basic/expansion rack panel



| Basic rack panel | Installation dimensions (mm) | | | | | | |
|------------------|------------------------------|----------------|----------------|----------------|----------------|----------------|----------------|
| | A ₁ | A ₂ | A ₃ | B ₁ | B ₂ | B ₃ | B ₄ |
| JW-24KB | 297 | 281 | 8 | 130 | 118 | 8 | 4 |
| JW-26KB | 768 | 352 | 8 | | | | |
| JW-28KB | 437 | 421 | 8 | | | | |

| Expansion rack panel | Installation dimensions (mm) | | | | | | |
|----------------------|------------------------------|----------------|----------------|----------------|----------------|----------------|----------------|
| | A ₁ | A ₂ | A ₃ | B ₁ | B ₂ | B ₃ | B ₄ |
| JW-24ZB | 226 | 210 | 8 | 130 | 118 | 8 | 4 |
| JW-26ZB | 297 | 281 | 8 | | | | |
| JW-28ZB | 368 | 352 | 8 | | | | |