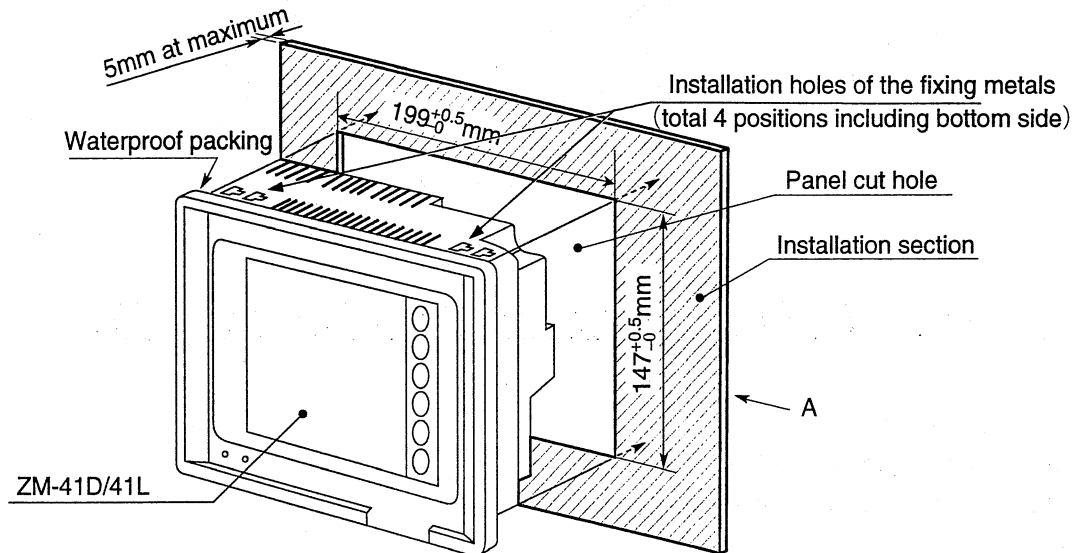
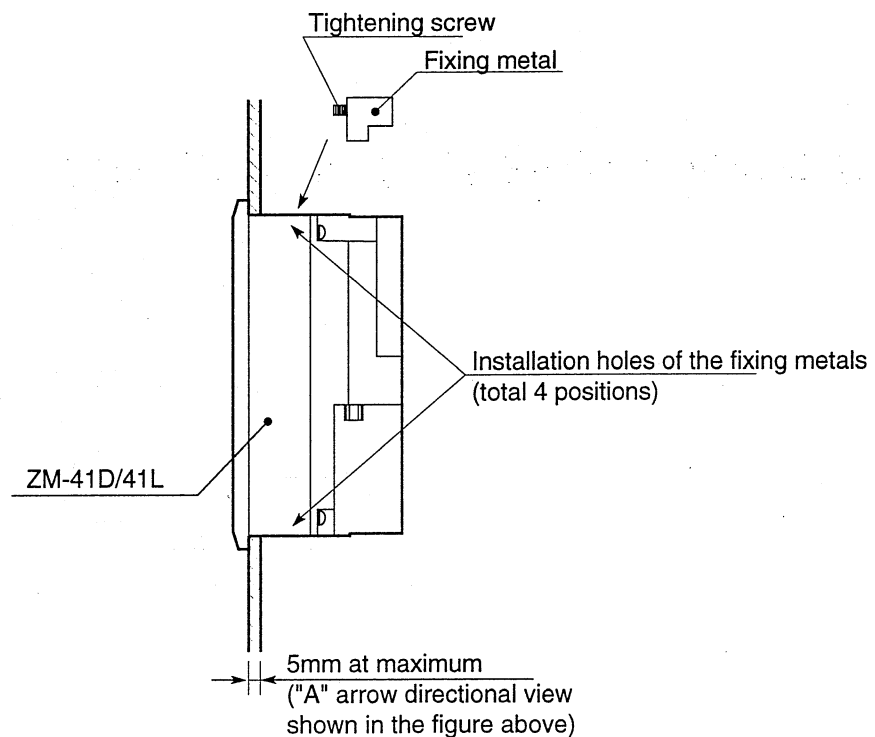


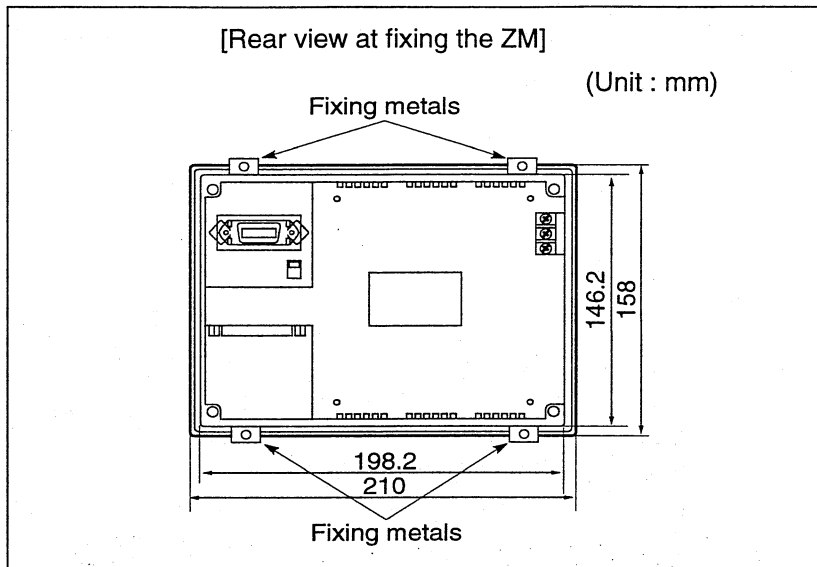
[2] Installation of ZM-41D/41L

- ① Make a hole (size : $147^{+0.5}_0 \times 199^{+0.5}_0$ mm) on the installation section (thickness : 5 mm at maximum) and install the control terminal.



- ② Insert the fixing metals (4 pieces) supplied with the control terminal into installation holes (4 positions) of the body. Tighten the retention screws of the fixing metal to fix the control terminal on an installation section of the panel.

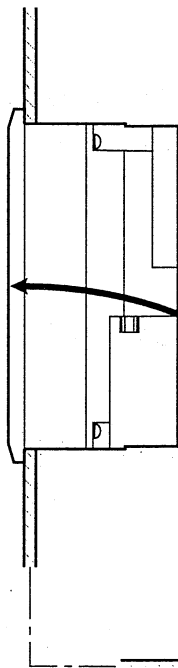




[Installation direction]

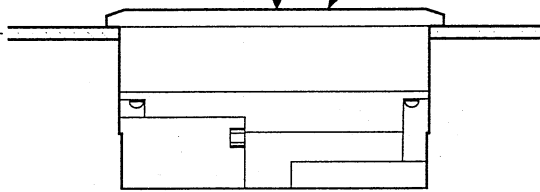
Install the control terminal within 90° angle as shown below.
 Installation in other direction may cause malfunction.

Install the control terminal
 in vertical direction
 with the display facing side.



90°

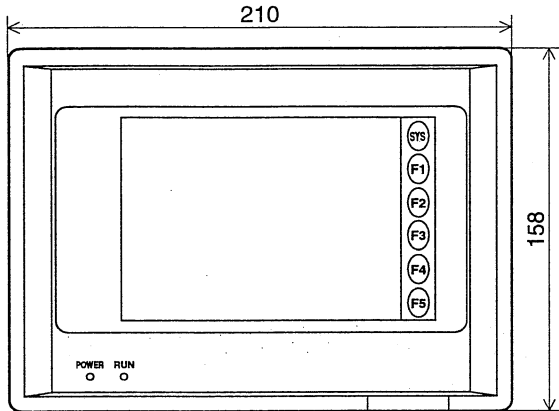
Install the control terminal
 in horizontal direction
 with the display facing
 upward.



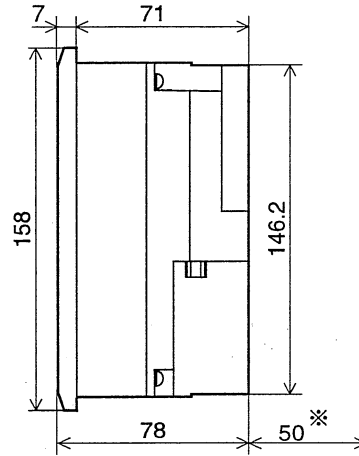
(2) ZM-41D/41L

(Unit : mm)

• Front view

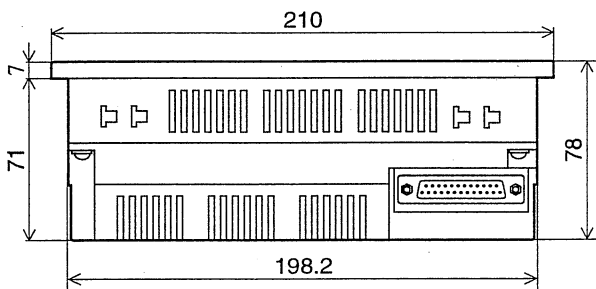


• Right side view

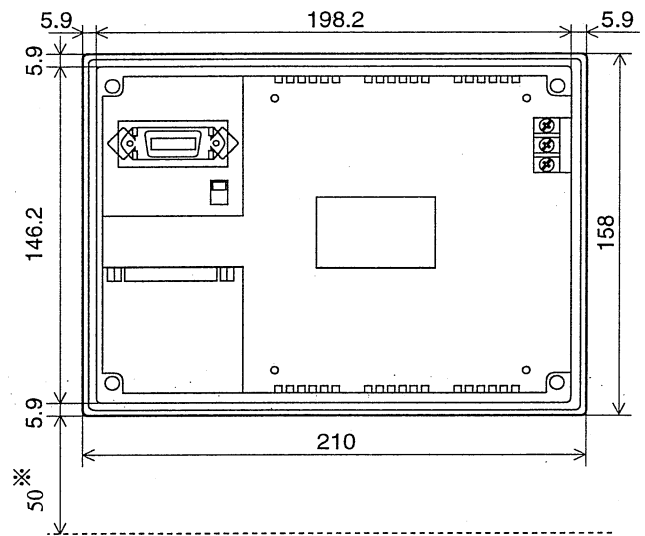


※Leave a minimum of 50mm for wiring the printer connection cable. (on the back of the main housing)

• Bottom view



• Rear view



※Leave a minimum of 50mm for wiring the link connection cable. (on the back of the main housing)